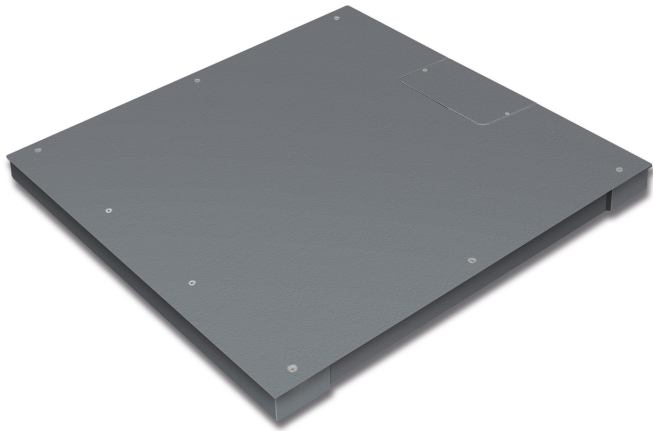


KERN KFP 600V20SNM

KERN

Weighing bridge made from steel, also with weighing plate screwed on from the top



Functions

IP protection - load cell	IP67
---------------------------	------

Environmental conditions

Ambient temperature [Min]	-10 °C
Ambient temperature [Max]	40 °C

Packing & Shipping

Readability force [d] (N)	2 d
Dimensions packaging (W×D×H)	1050×1050×260 mm
Net weight	94 kg
Shipping method	Freight
Net weight approx.	95 kg
Gross weight approx.	135 kg
Shipping weight	131 kg

Services (optional)

Article number for conformity assessment	965-230
Article number for DAkkS calibration	963-130

Pictograms

STANDARD



FACTORY



Category

Brand	KERN
Product category	Component
Product group	Weighing bridge
Product family	KFP-V20-IP67

Measuring System

Weighing capacity [Max]	600 kg
Readability [d]	200 g
Minimum weight [Min]	4 kg
Loadcell type	ZEMIC H8C 0.5 ton
Load cell connection	4-wire

Approval

Accuracy classe	III
Verification scale interval [e]	200 g
Conformity assessment possible ex works	✓

Construction

Dimensions weighing platform (W×D×H)	1000×1000×85 mm
Material weighing plate	steel, powder-coated
Material platform	steel, powder-coated
Dimensions weighing surface (W×D)	1000×1000 mm
Cable length	5 m
Allowed cable length display device [Max]	20 m
Material load cell(s)	alloyed steel
Load cells - number	4
Levelling feet adjustable	✓